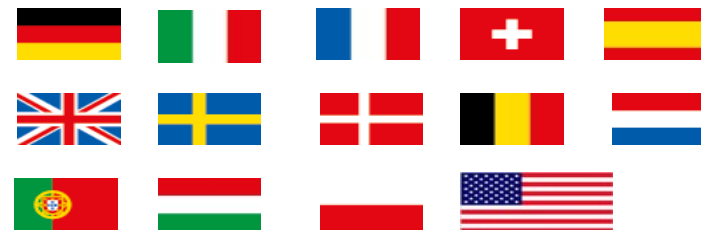
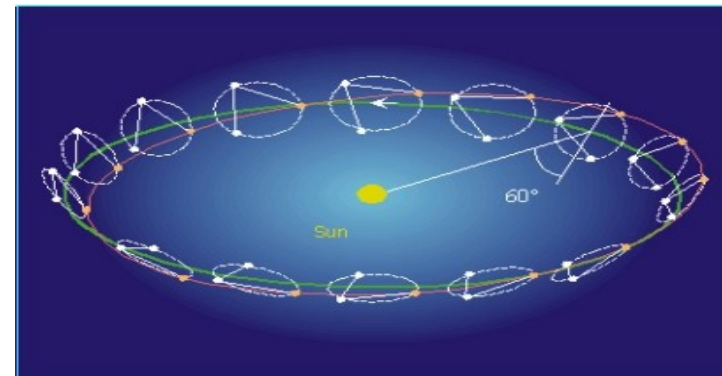




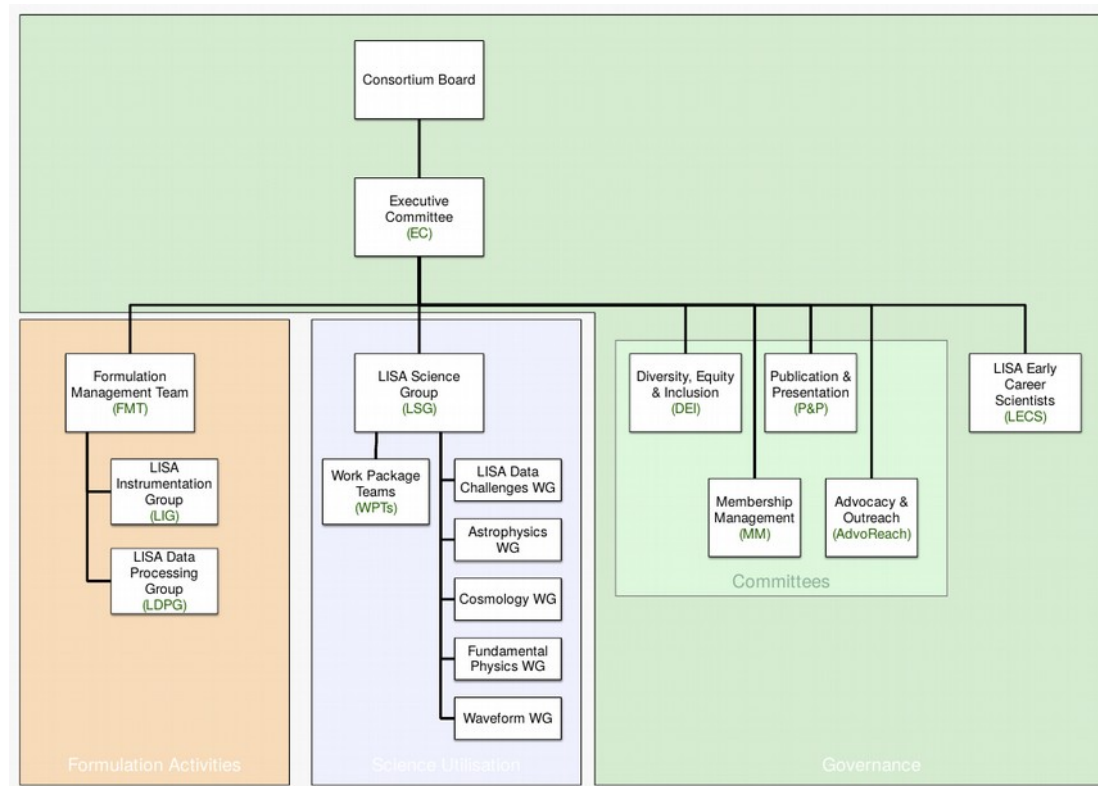
The LISA consortium and how to get involved

Gijs Nelemans

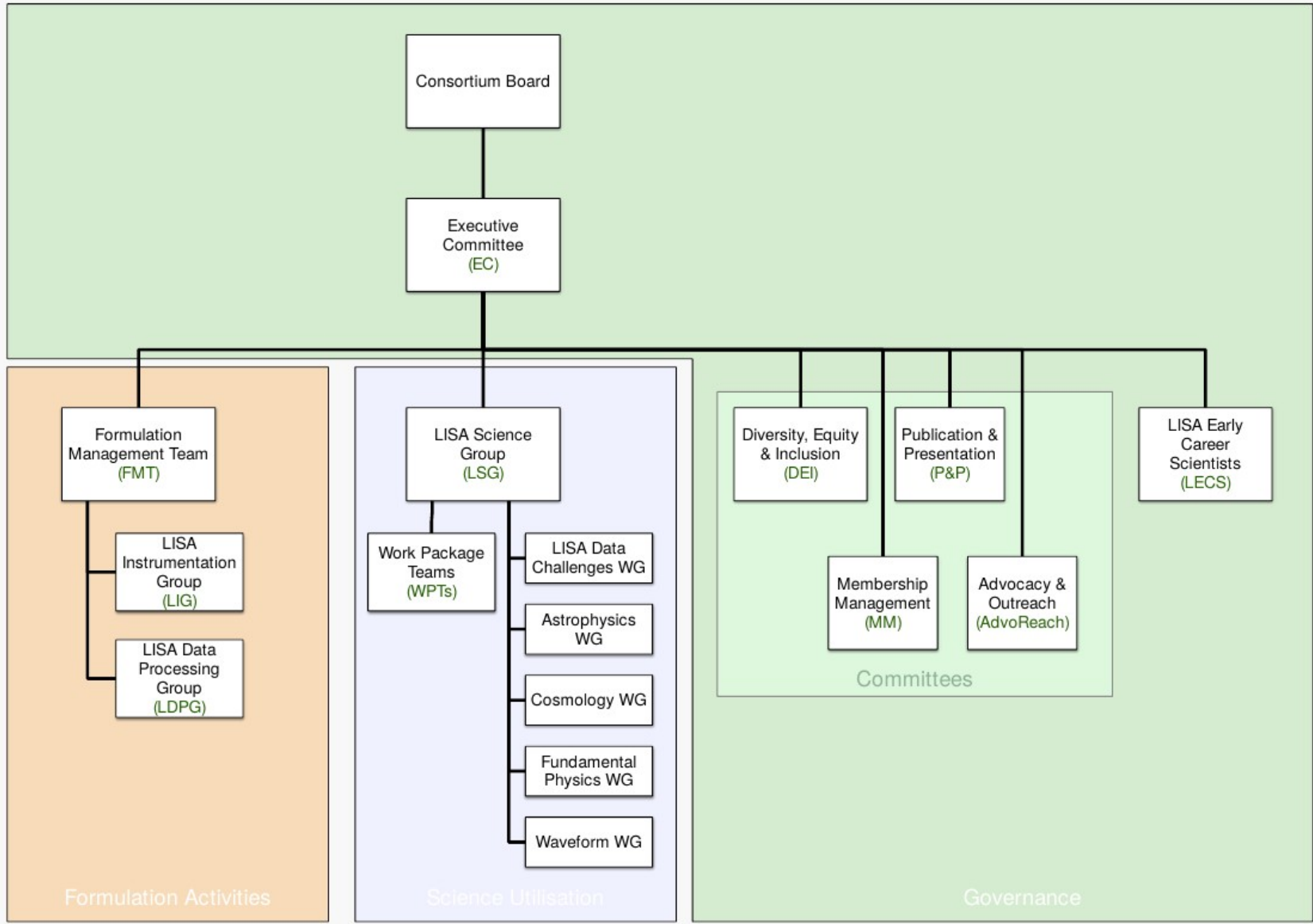
- ▶ Scientific collaboration and payload via LISA consortium
- ▶ Strong link with US (NASA contribution significant)
- ▶ ESA LISA Pathfinder, succesful technology demonstrator



- ▶ Consortium board
- ▶ Executive committee
- ▶ Formulation Management Team
 - ▶ LISA Instrumentation Group (LIG)
 - ▶ LISA Data Processing Group (LDPG)
- ▶ LISA Science Group (LSG)
 - ▶ Work Package Teams
 - ▶ Working Groups
- ▶ *Diversity & Inclusion*
- ▶ *Membership Management*
- ▶ *Publication & Presentation*
- ▶ *Advocacy & Outreach*
- ▶ *LISA Early Career Scientists (LECS)*



- ▶ Consortium
- ▶ Executive
- ▶ Formulation
- ▶ LISA
- ▶ LISA
- ▶ LISA S
- ▶ Work
- ▶ Work
- ▶ *Diversi*
- ▶ *Membe*
- ▶ *Publica*
- ▶ *Advoca*
- ▶ *LISA E*



LISA Early Career Scientists (LECS)

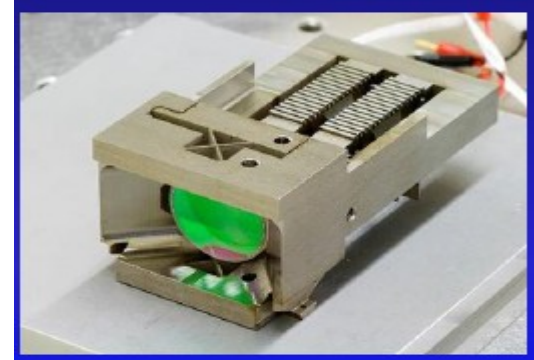
▶ Activities

- ▶ Monthly consortium telecons (Monday 4CEST)
- ▶ Consortium meetings (2x/yr)
- ▶ LISA symposium (1x/2yr)
- ▶ Telecons

▶ How to contribute

- ▶ Instrumentation via national contribution
- ▶ Via working groups (white paper, projects)
- ▶ Via work package teams
- ▶ Via LDPG

- ▶ Technology
 - ▶ Mechanisms optical bench (TNO, SRON electronics)
 - ▶ Photodiodes (Nikhef/SRON/KU Leuven)
- ▶ Consortium/management
 - ▶ Cons. board (Nelemans)
 - ▶ Nat. Proj. Managers board (den Herder)
 - ▶ Science group (Rossi co-chair, Nissanke MMA co-chair)
 - ▶ Instrument group core-team (Frericks)
 - ▶ Astronomy WG (Nelemans, co-chair)



- ▶ LISA-NL is single “group” in LISA consortium
- ▶ LISA-NL Hardware contributions
 - ▶ Monthly telecon
 - ▶ Updates, organisation
 - ▶ Discuss/apply for funding
- ▶ LISA-NL Science
 - ▶ Loose group
 - ▶ Recent ENW-XL proposal
 - ▶ Time to get more organised (today!)
- ▶ LISA-NL organisation
 - ▶ Small group, building on hardware telecons
 - ▶ Evolve to more structured organisation
 - ▶ Working on website, newsletter
 - ▶ Meetings
- ▶ How to get involved?
 - ▶ Sign up for LISA-NL (and thus LISA consortium)
 - ▶ Join this afternoon’s discussions
 - ▶ Let us know what you think/want