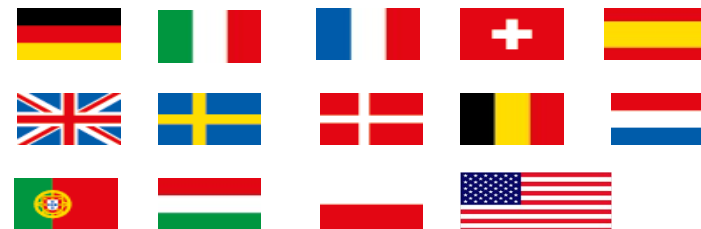
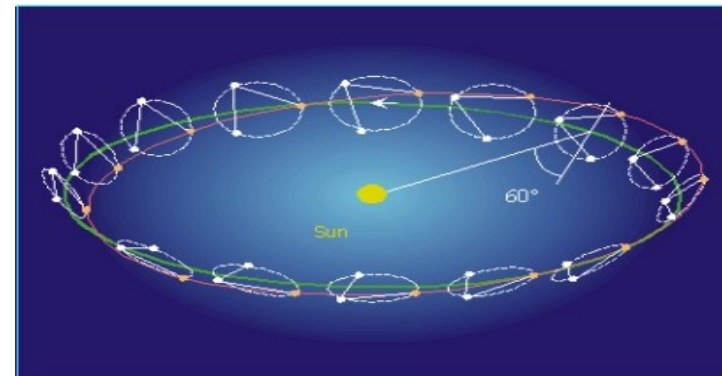




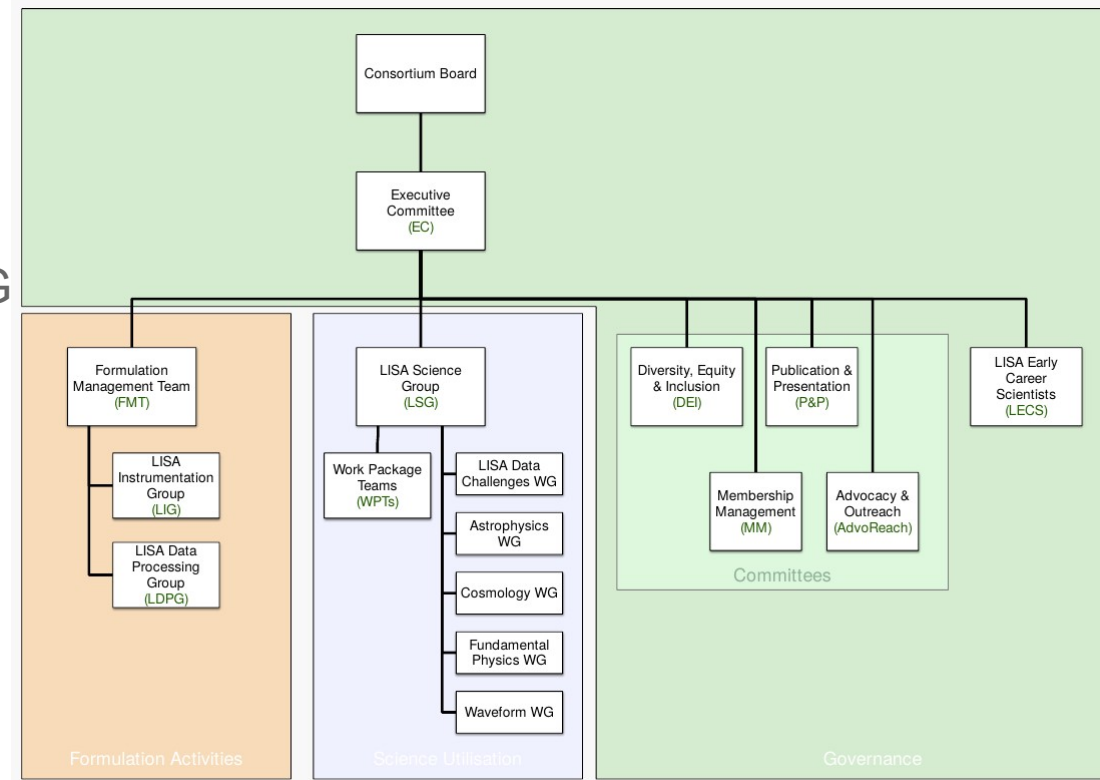
The LISA(-NL) consortium and how to get involved

Gijs Nelemans

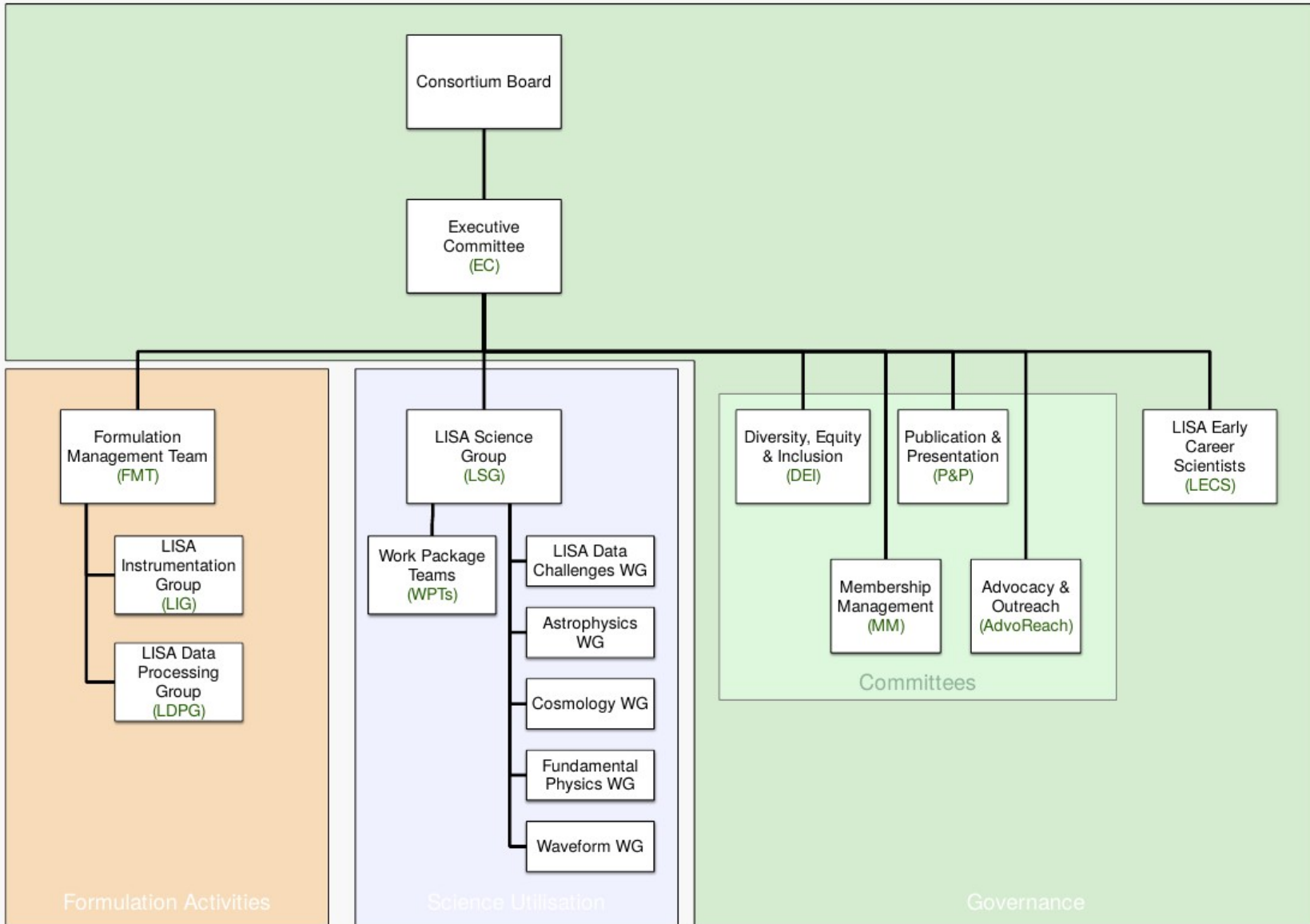
- ▶ Scientific collaboration that pushed the mission and the various contributions from member states and NASA
- ▶ Strong link with US (NASA contribution significant)
- ▶ ESA LISA Pathfinder, succesful technology demonstrator



- ▶ Consortium board
- ▶ Executive committee
- ▶ Formulation Management Team
 - ▶ LISA Instrumentation Group (LIG)
 - ▶ LISA Data Processing Group (LDPG)
- ▶ LISA Science Group (LSG)
 - ▶ Work Package Teams
 - ▶ Working Groups
- ▶ *Diversity & Inclusion*
- ▶ *Membership Management*
- ▶ *Publication & Presentation*
- ▶ *Advocacy & Outreach*
- ▶ *LISA Early Career Scientists (LECS)*



- ▶ Consortium
- ▶ Executive
- ▶ Formulation
- ▶ LISA
- ▶ LISA
- ▶ LISA S
- ▶ World
- ▶ World
- ▶ *Diversi*
- ▶ *Membe*
- ▶ *Publica*
- ▶ *Advoca*
- ▶ *LISA E*

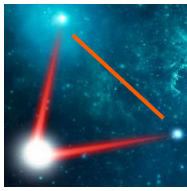


▶ Activities

- ▶ Monthly consortium telecons (Monday 4CEST)
- ▶ Consortium meetings (2x/yr)
- ▶ LISA symposium (1x/2yr)
- ▶ Telecons

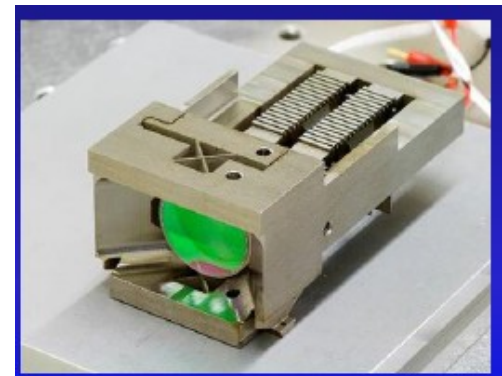
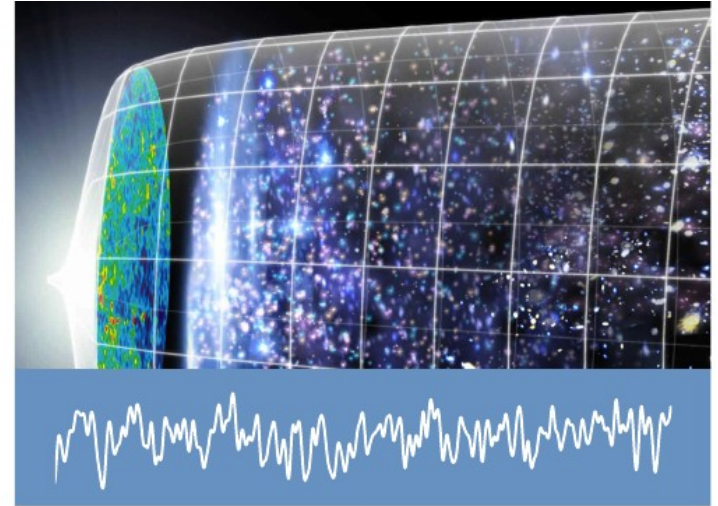
▶ How to contribute

- ▶ Mostly via LSG (next talk)
- ▶ Via working groups (white paper, projects)
- ▶ Via work package teams
- ▶ Via data processing (later today)



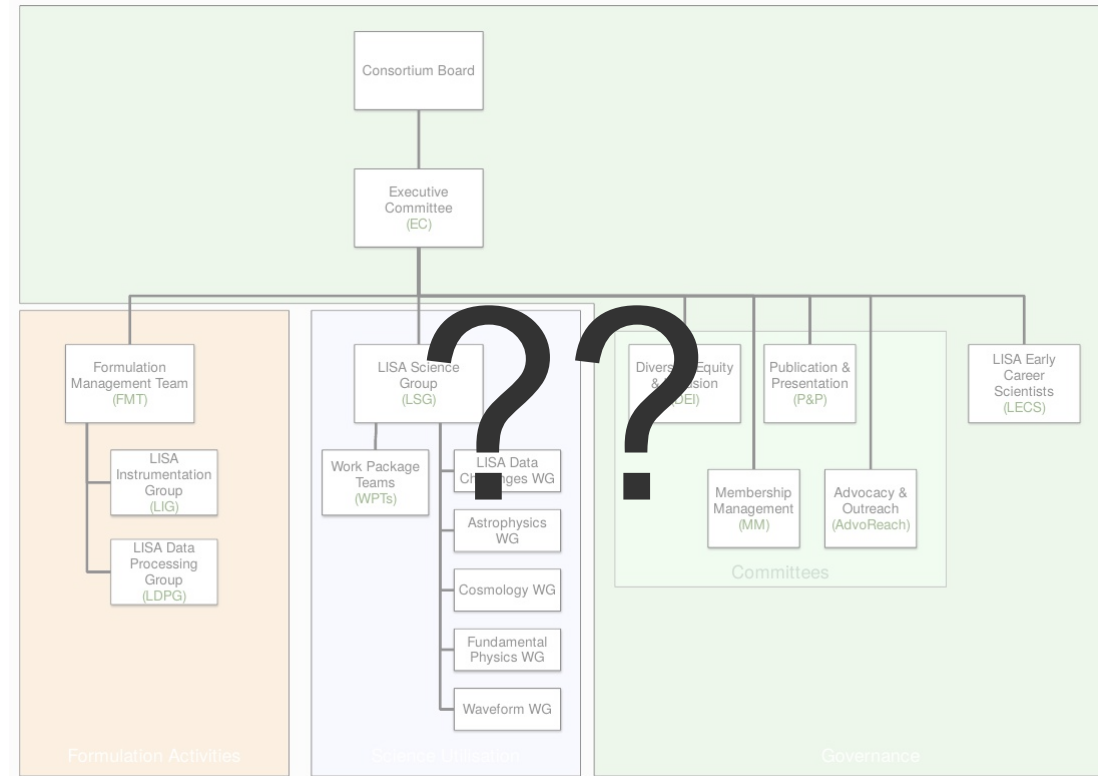
Dutch science/management contributions

- ▶ Science
 - ▶ Compact binaries
(RU, UL, SRON, UvA)
 - ▶ Fundamental physics
(Nikhef, UvA, UU, RUG, UM, RU)
 - ▶ Early Universe
(Nikhef, RUG, UU, UL)
 - ▶ Structure formation
(UL, RUG, UvA, SRON)
- ▶ Consortium/management
 - ▶ Cons. board (Nelemans)
 - ▶ Nat. Proj. Managers board
(Den Herder)
 - ▶ Science group
(Rossi co-chair, Nissanke MMA co-chair)
 - ▶ IDS core-team (Dieleman, van Bakel)
 - ▶ Advoreach (Arends)



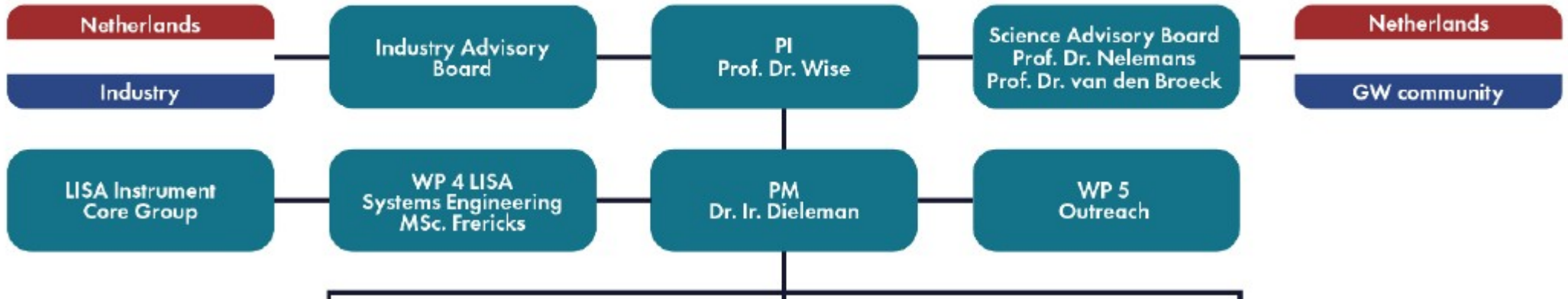
Future Consortium structure

- ▶ After adoption things will change (but maybe not so much)
- ▶ Direct link between ESA and hardware groups (IDS, GRS etc)
- ▶ Instrument performance, operations and data processing contributions likely/possibly via consortium
- ▶ Consortium remains science community that wants to make LISA a success
- ▶ Aim is to make more formal link between consortium (board) and contributing countries, incl. US



- ▶ LISA-NL is single “group” in LISA consortium
- ▶ LISA-NL Hardware contributions
 - ▶ Monthly telecon
 - ▶ Updates, organisation
 - ▶ Discuss/apply for funding
- ▶ LISA-NL Science
 - ▶ Loose group
 - ▶ Ad hoc collaborations
 - ▶ Let us know if you want to contribute
- ▶ LISA-NL website
 - ▶ www.lisa-nl.org/nl
- ▶ LISA-NL organisation
 - ▶ Small group, building on hardware telecons
 - ▶ Evolve to more structured organisation
 - ▶ Meetings

► Roadmap funding organisation

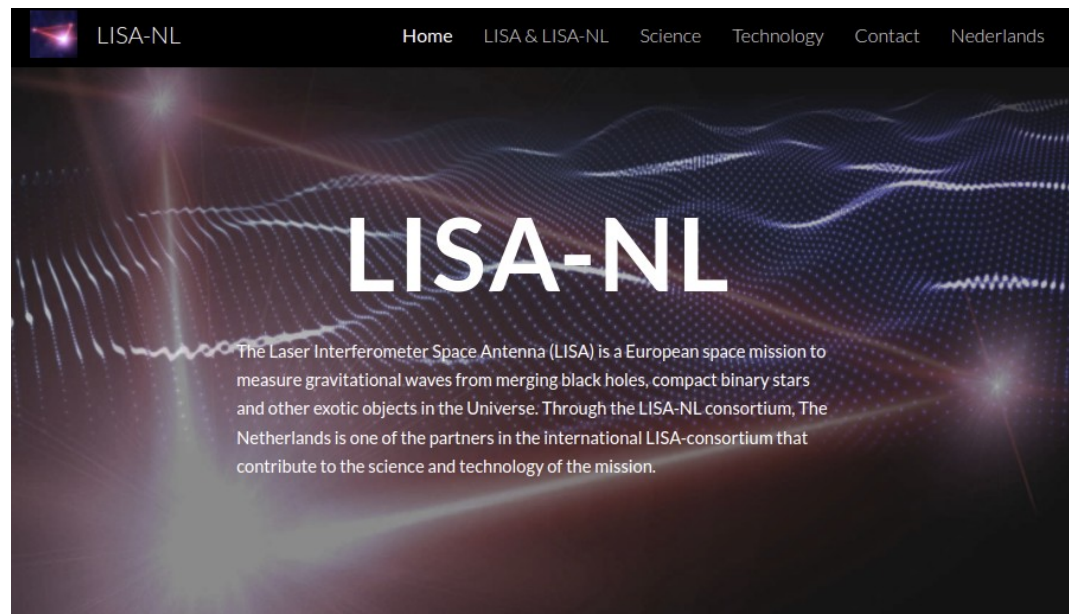


- Industry advisory board: Beijersbergen (Cosine), Voncken (ASML), Hooijer (TNO), Kat (Amazec photonics)
- Science advisory board (link to community, TDB how)
- Outreach activities (let me know if you want to become involved)



LISA-NL

- ▶ How to get involved?
 - ▶ Get updates via mailing list (you will be added)
 - ▶ Sign up for LISA-NL (and thus LISA consortium)
 - ▶ Join this afternoon's discussions



LISA and LISA-NL

LISA is a European space mission. The Netherlands participates in this mission via the LISA-NL Consortium.

[Read more](#)